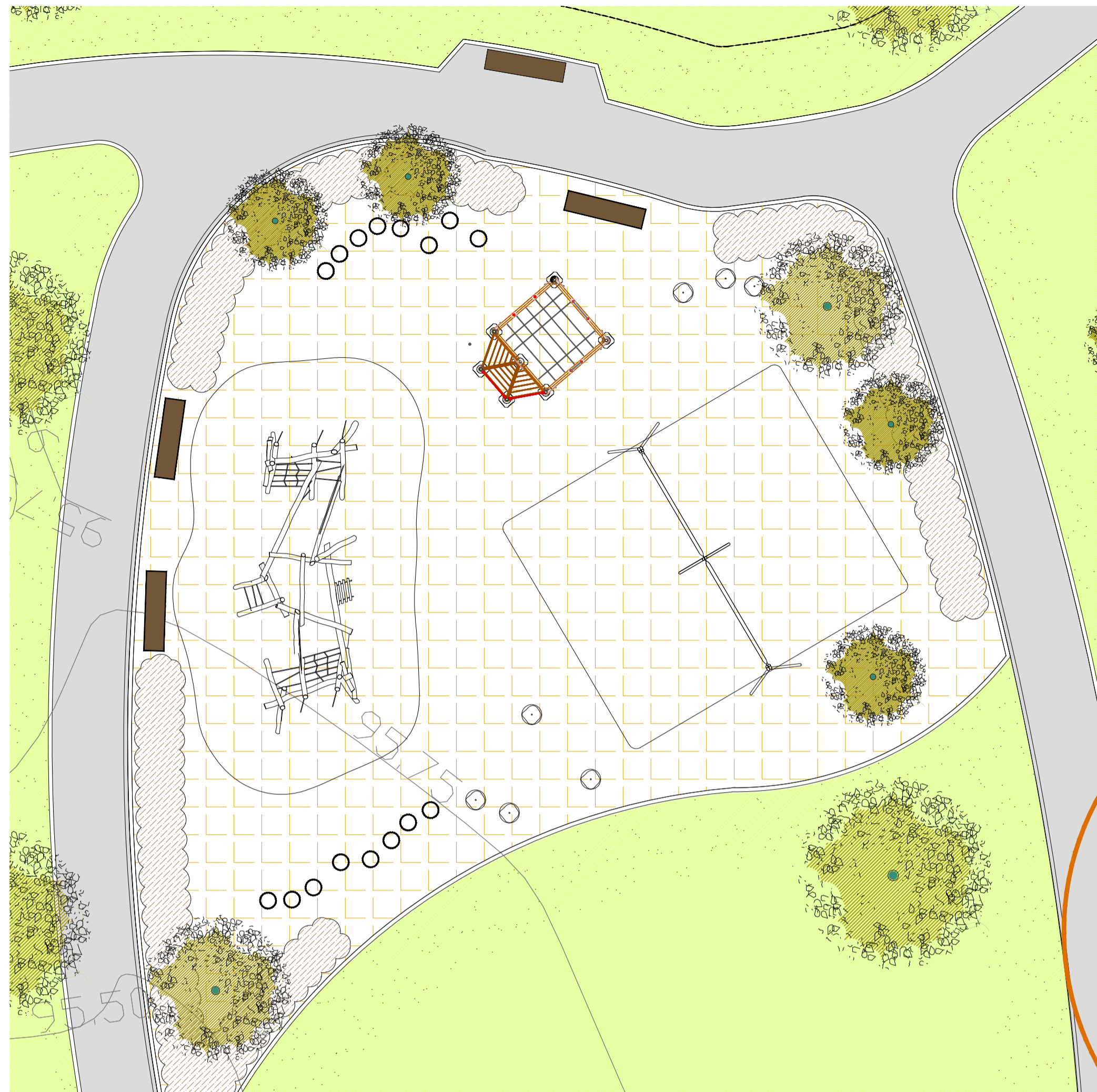


Play Area 2



eibe
complete inspiration

5 45 097 0530 6
paradiso play unit
Crona
made in germany

Scope of delivery
20x public tables
2x climbing net, plastic-coated steel cable
1x rope ladder, wood rings, plastic-coated steel cable, table
8x climbing rope, plastic-coated steel cable
1x chain crossover and secure, stainless steel

Materials: **Rubberised mat**

| | |
|-----------------------|-----------------|
| Foundation level | FL 3 |
| Minimum space | 1120x650x100 cm |
| Free falling height | 200 cm |
| Impact protection net | 58.0 m² |
| Foundation | 17x 12' |
| Weight | - |

© eibeplay Ltd, eibe House | Foyl's Home Farm | A3 Bypass Road, Hartburn, Surrey | (GB) 4 402 | UK | Fax: +44 (0)14 63913 854 | Fax: +44 (0)14 63913 851 | eibe@eibe.co.uk | www.eibe.co.uk

HAGS
UniPlay Ficcorenta

8061750
6450 x 6050

Product Specifications

- Age Range: 5-12
- Assembly Time: 26 hours
- Length (mm): 3000 mm
- Width (mm): 2300 mm
- Height (mm): 3050 mm
- Net Weight: 440.80 kg
- Volume (m³): 3.42 m³
- Safety Area Length (mm): 6450 mm
- Safety Area Width (mm): 6050 mm
- Fall Height (mm): 2200 mm
- Safety Area: 35 m²

Material

| Material | kg | % |
|-----------------|---------------|-------------|
| Pine | 219.1443 | 35.67 |
| Plywood | 1.9845 | 0.32 |
| HPL | 5.1100 | 0.83 |
| Untreated Steel | 122.6687 | 19.97 |
| Stainless steel | 1.3183 | 0.21 |
| Total | 614 kg | 100% |

© eibeplay Ltd, eibe House | Foyl's Home Farm | A3 Bypass Road, Hartburn, Surrey | (GB) 4 402 | UK | Fax: +44 (0)14 63913 854 | Fax: +44 (0)14 63913 851 | eibe@eibe.co.uk | www.eibe.co.uk

eibe
complete inspiration

5 10 170 0110 0
playo quadruple swing
Kondor
made in germany

Scope of delivery
8x post with post base, 20x galvanized steel
2x swing, chrome, galvanized steel
8x swing joint, galvanized steel
2x safety swing seat with cradle, rubber, 600x100 steel
1x rest swing Ø 100, galvanized steel, plastic-coated steel cable

Materials: **58x p1**

| | |
|-----------------------|---------------------------|
| Foundation level | FL 1 |
| Minimum space | 800x430x80 cm |
| Free falling height | 140 cm |
| Impact protection net | 47.2 m² |
| Foundation | 6x 12' or 6x 10' x 6x 12' |
| Larger section | 238x64x22 cm |
| Weight section | 45 kg |

© eibeplay Ltd, eibe House | Foyl's Home Farm | A3 Bypass Road, Hartburn, Surrey | (GB) 4 402 | UK | Fax: +44 (0)14 63913 854 | Fax: +44 (0)14 63913 851 | eibe@eibe.co.uk | www.eibe.co.uk

eibe
complete inspiration

5 55 311 5
balance step 60
made in germany

Scope of delivery
1x step Ø 16
1x post steel, galvanized steel

Materials: **58x p1**

| | |
|-----------------------|----------------|
| Foundation level | FL 3 |
| Minimum space | Ø14x239 cm |
| Free falling height | 59 cm |
| Impact protection net | - |
| Foundation | 1x 12' |
| Assembly | 1 person/0.2 h |
| Larger section | 57x78 cm |
| Weight section | 10 kg |

© eibeplay Ltd, eibe House | Foyl's Home Farm | A3 Bypass Road, Hartburn, Surrey | (GB) 4 402 | UK | Fax: +44 (0)14 63913 854 | Fax: +44 (0)14 63913 851 | eibe@eibe.co.uk | www.eibe.co.uk

eibe
complete inspiration

5 55 310 5
balance step 40
made in germany

Scope of delivery
1x step Ø 16
1x post steel, galvanized steel

Materials: **58x p1**

| | |
|-----------------------|----------------|
| Foundation level | FL 3 |
| Minimum space | Ø14x200 cm |
| Free falling height | 38 cm |
| Impact protection net | - |
| Foundation | 1x 12' |
| Assembly | 1 person/0.2 h |
| Larger section | 57x78 cm |
| Weight section | 6.5 kg |

© eibeplay Ltd, eibe House | Foyl's Home Farm | A3 Bypass Road, Hartburn, Surrey | (GB) 4 402 | UK | Fax: +44 (0)14 63913 854 | Fax: +44 (0)14 63913 851 | eibe@eibe.co.uk | www.eibe.co.uk

eibe
complete inspiration

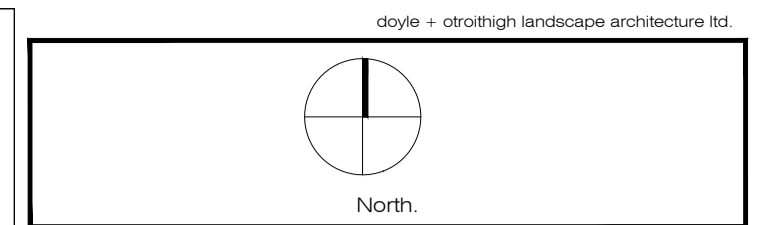
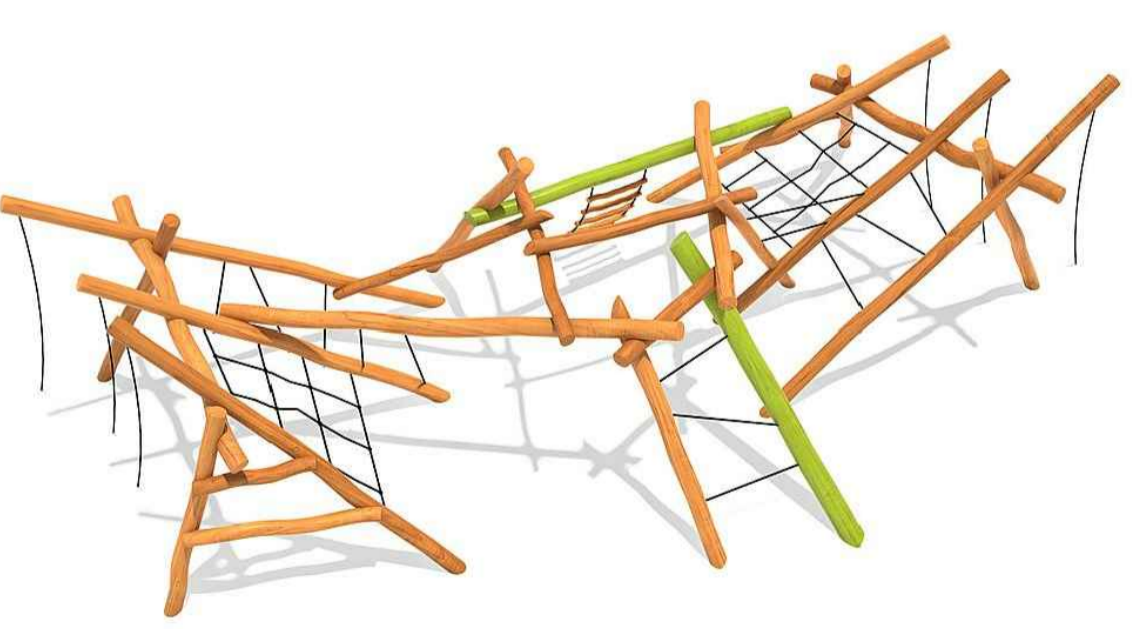
5 55 309 5
balance jump-over mushroom Square Dance
made in germany

Scope of delivery
1x mushroom post, Ø16
1x mushroom head, GRP
1x post steel, galvanized steel

Materials: **58x p1**

| | |
|-----------------------|----------------|
| Foundation level | FL 1 |
| Minimum space | Ø 30x20 cm |
| Free falling height | 50 cm |
| Impact protection net | - |
| Foundation | 1x 12' |
| Assembly | 1 person/0.2 h |
| Larger section | 19x60 30 cm |
| Weight section | 6 kg |

© eibeplay Ltd, eibe House | Foyl's Home Farm | A3 Bypass Road, Hartburn, Surrey | (GB) 4 402 | UK | Fax: +44 (0)14 63913 854 | Fax: +44 (0)14 63913 851 | eibe@eibe.co.uk | www.eibe.co.uk



- Legend**
- Proposed Amenity grass areas with public ownership and to public open space; grass seed sown on 150mm clean topsoil (imported if necessary), over 250mm subsoil, all subsoil to be punctured and consolidated to aid natural drainage.
 - Proposed open space tree planting - specimen species.
 - Proposed Play area - grass rubberised matting
 - Proposed brushed concrete surface surrounding dwellings and on footpaths through open space.
 - Proposed seating
- Appropriate root barriers to be installed as necessary where services run close to existing/proposed trees.
- Refer to Tree Survey, Tree Constraints drawing, Tree Protection Plan and supporting Arboricultural Impact Assessment as prepared by 'The Tree File' for all detailed information which has been fully co-ordinated with the Landscape Plans.

| | |
|------------------------------------------------------------------------------------------------------------------------------------------------------------------------------------------------|-----------------------------------------------------------------------------|
| Date | Note |
| | |
| Project name: Proposed Strategic Housing Development at Dunshaughlin East - Phase 2 | Project number: 19-048 |
| Drawing name: Play Ground Design Play Area 2 (2 of 3) | Drawing number: PG-02-PP |
| Drawing scale @ A1: 1:100 | Checked by: ld |
| Status: Planning | date: 30.09.2020 |
| Contact details: Linda Doyle (Director) mobile: 087 267 4196 e-mail linda@doyle-otroithigh.com Dainn O'Troithigh (Director) mobile: 086 300 3499 e-mail dainn@doyle-otroithigh.com | Office address: Pembroke House, 28-32 Upper Pembroke St, Dublin 2. |